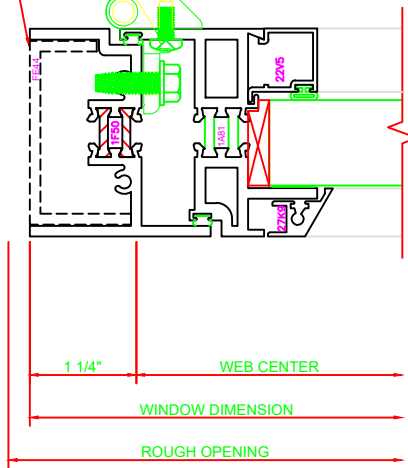
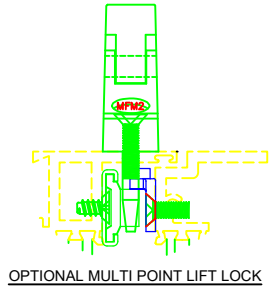
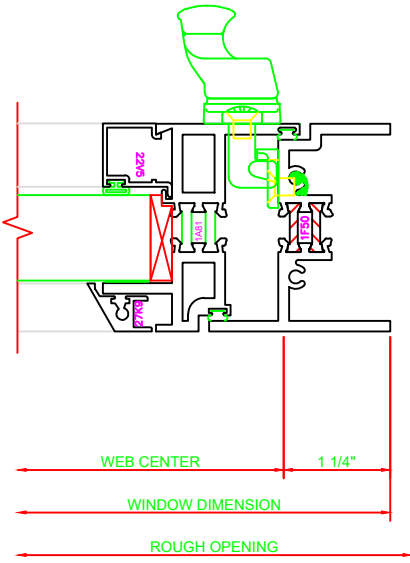


13 = **ERECTOR NOTE:**  
 THE HINGED JAMB FRAME SHALL BE INSTALLED PLUMB. ALL HINGES SHALL BE SECURELY BLOCKED AND ANCHORED TO THE CONDITION THROUGH THE HINGES OR AS CLOSE AS POSSIBLE TO THE HINGES.

NOTE: HINGE SUPPORT FE44 IS SHIPPED LOOSE.

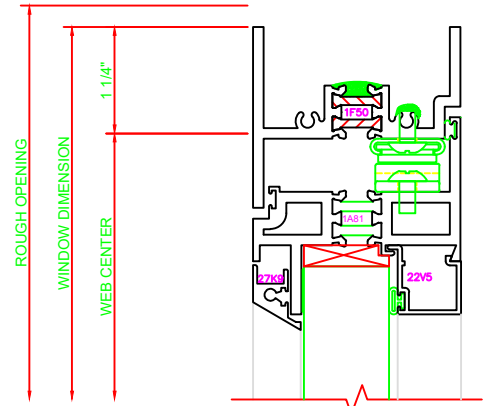


430	JAMB
	550G CASEMENT IN

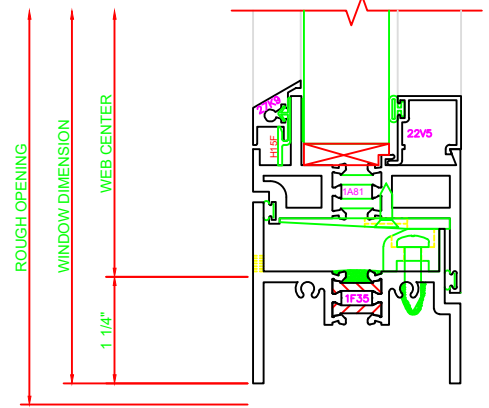


405	JAMB
	550G CASEMENT IN

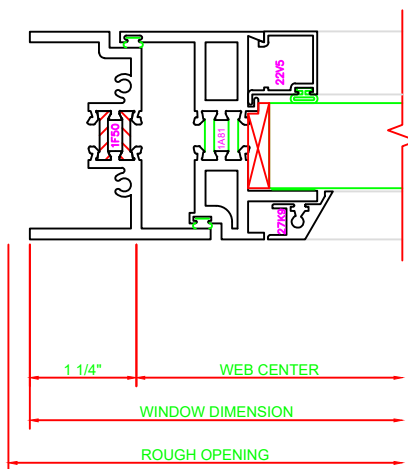
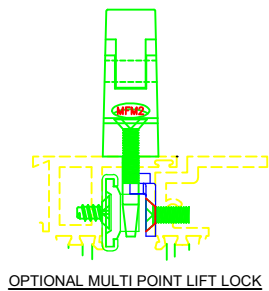
110	HEAD
	550G CASEMENT IN



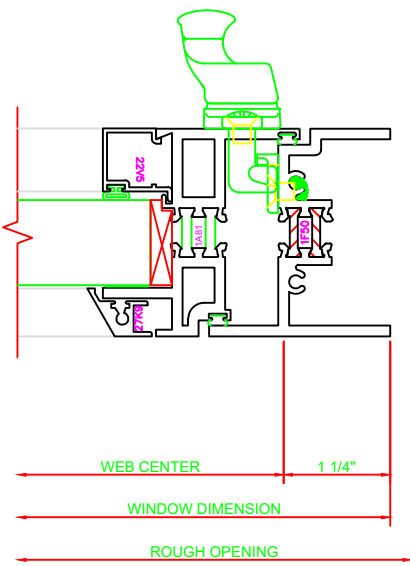
209	SILL
	550G CASEMENT IN



## BUTT HINGE

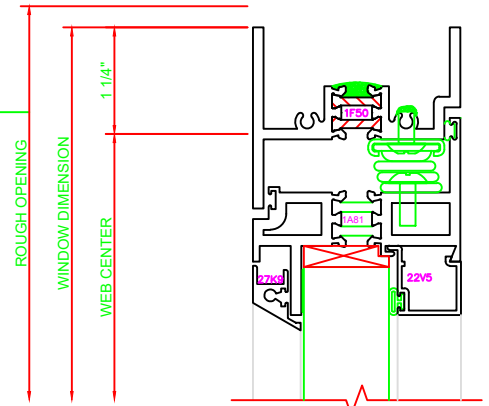


408	JAMB
	550G CASEMENT IN

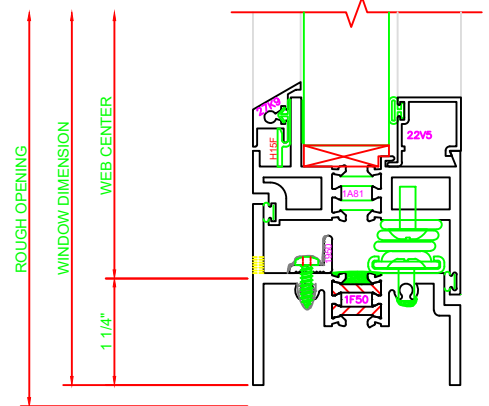


405	JAMB
	550G CASEMENT IN

102	HEAD
	550G CASEMENT IN



202	SILL
	550G CASEMENT IN



## CASEMENT ARMS