

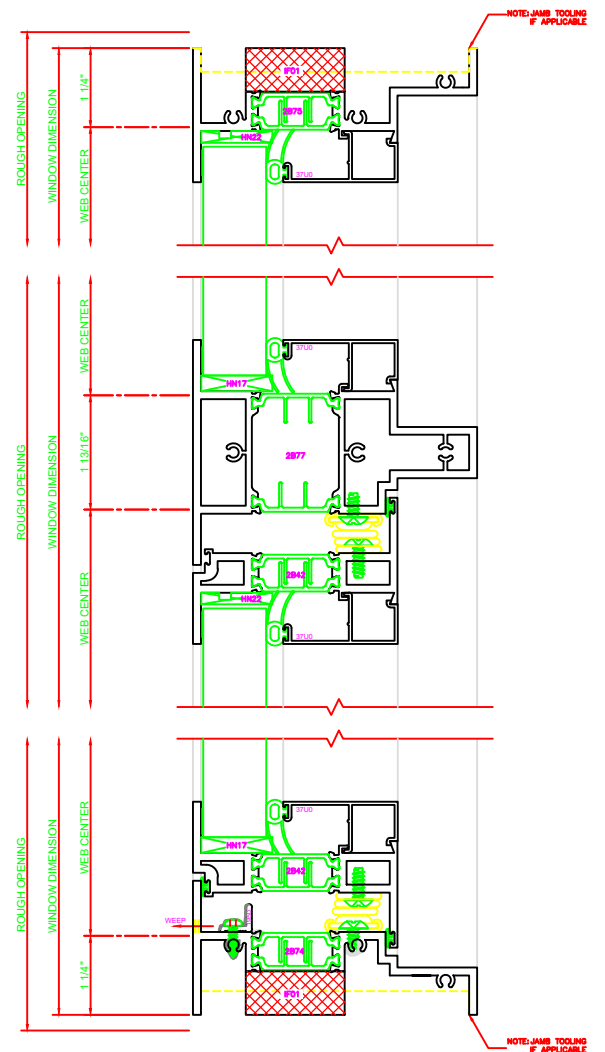
430	JAMB
SERIES: 450X CASEMENT IN 4-BAR ARMS	

431	JAMB
SERIES: 450X CASEMENT IN	

100	HEAD
SERIES: 450X FIXED	

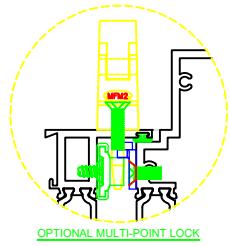
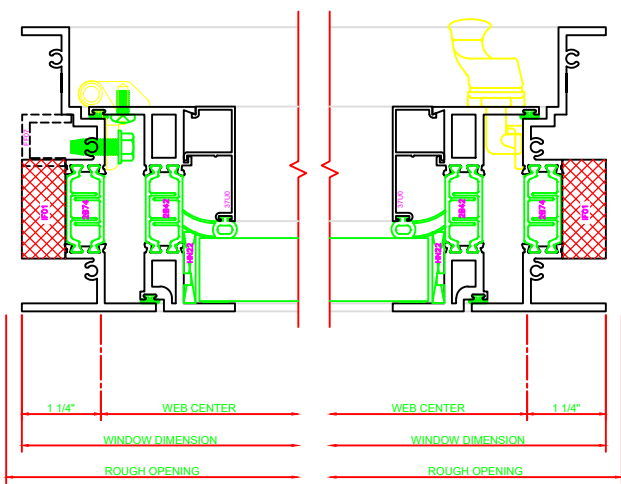
532	MEETING RAIL
SERIES: 450X CASEMENT IN 4-BAR ARMS	

230	SILL
SERIES: 450X CASEMENT IN 4-BAR ARMS	



4-BAR ARMS BUTT HINGE

13 = ERECTOR NOTE:
THE HINGED JAMB FRAME SHALL BE INSTALLED PLUMB. ALL HINGES SHALL BE SECURELY BLOCKED AND ANCHORED TO THE CONDITION THROUGH THE HINGES OR AS CLOSE AS POSSIBLE TO THE HINGES.



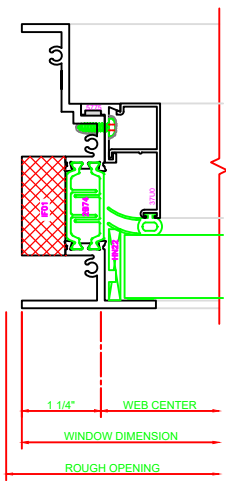
432	JAMB
SERIES: 450X CASEMENT IN BUTT HINGE	

431	JAMB
SERIES: 450X CASEMENT IN	

100	HEAD
SERIES: 450X FIXED	

536	MEETING RAIL
SERIES: 450X FIXED (I) BUTT HINGE	

231	SILL
SERIES: 450X CASEMENT IN BUTT HINGE	



402	JAMB
SERIES: 450X FIXED	

