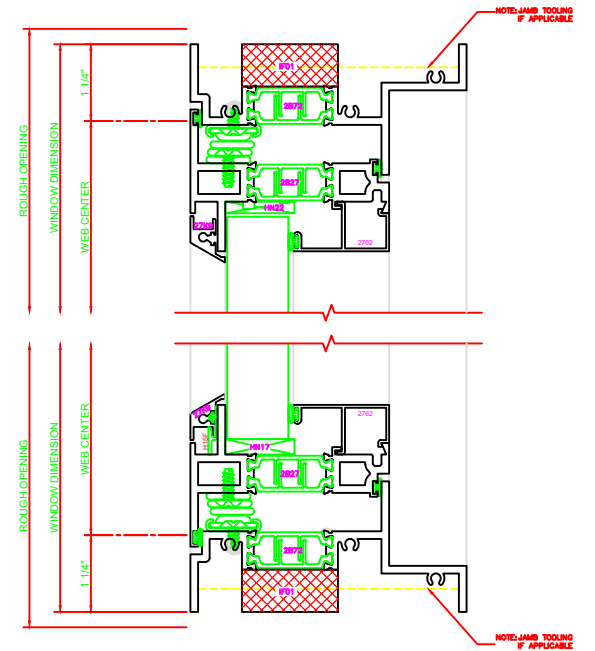


440	JAMB
	SERIES: 450G CASEMENT OUT 4-BAR ARMS

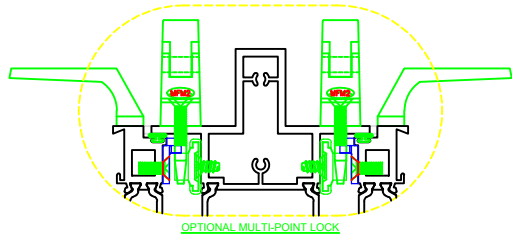
642	MEETING RAIL
	SERIES: 450G C.O./C.O. 4-BAR ARMS

140	HEAD
	SERIES: 450G CASEMENT OUT 4-BAR ARMS

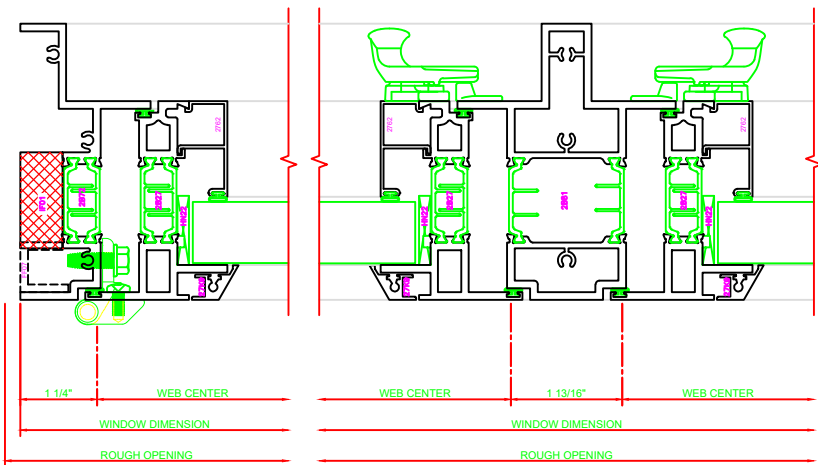
240	SILL
	SERIES: 450G CASEMENT OUT 4-BAR ARMS



## 4-BAR ARMS BUTT HINGE



13 = **ERECTOR NOTE:**  
THE HINGED JAMB FRAME SHALL BE INSTALLED PLUMB. ALL HINGES SHALL BE SECURELY BLOCKED AND ANCHORED TO THE CONDITION THROUGH THE HINGES OR AS CLOSE AS POSSIBLE TO THE HINGES.



442	JAMB
	SERIES: 450G CASEMENT OUT BUTT HINGE

642	MEETING RAIL
	SERIES: 450G C.O./C.O. 4-BAR ARMS

141	HEAD
	SERIES: 450G CASEMENT OUT BUTT HINGE

241	SILL
	SERIES: 450G CASEMENT OUT BUTT HINGE

