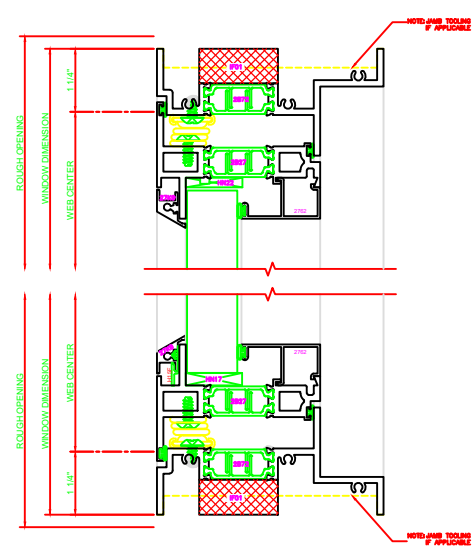


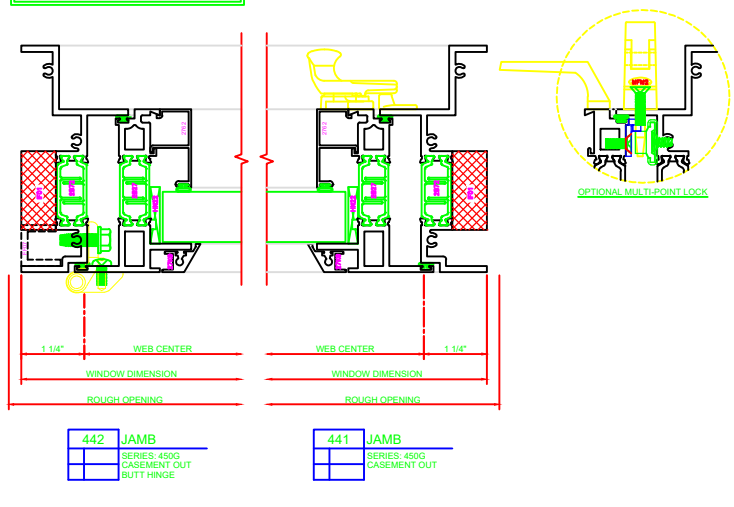
140	HEAD
	SERIES: 450G
	CASEMENT OUT
	4-BAR ARMS

240	SILL
	SERIES: 450G
	CASEMENT OUT
	4-BAR ARMS



## 4-BAR ARMS BUTT HINGE

**ERECTOR NOTE:**  
THE HINGED JAMB FRAME SHALL BE INSTALLED PLUMB. ALL HINGES SHALL BE SECURELY BLOCKED AND ANCHORED TO THE CONDITION THROUGH THE HINGES OR AS CLOSE AS POSSIBLE TO THE HINGES.



141	HEAD
	SERIES: 450G
	CASEMENT OUT
	BUTT HINGE

241	SILL
	SERIES: 450G
	CASEMENT OUT
	BUTT HINGE

