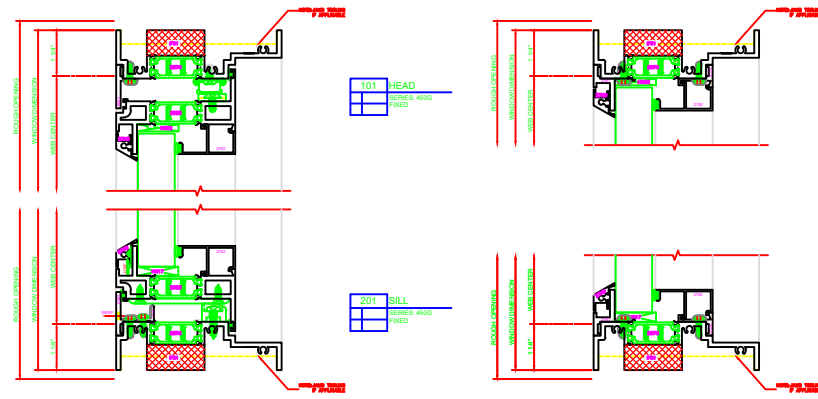
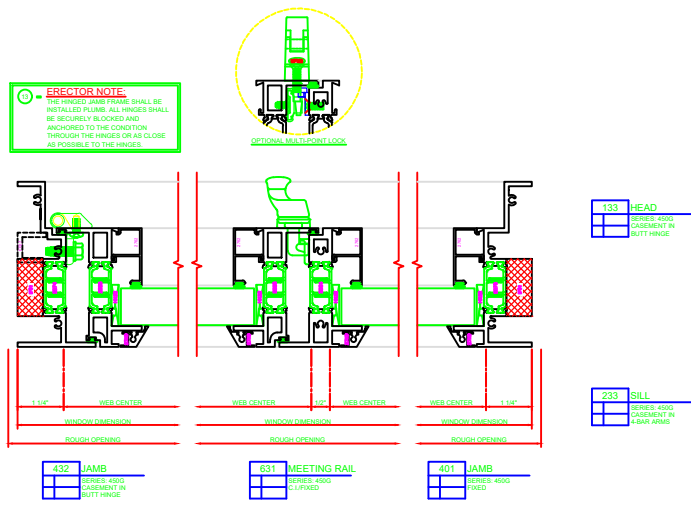


4-BAR ARMS
BUTT HINGE



ERECTOR NOTE:
THE HINGED JAMB FRAME SHALL BE
INSTALLED PLUMB. ALL HINGES SHALL
BE SECURELY BLOCKED AND
ANCHORED TO THE CONCRETE
THROUGH THE HINGES OR AS CLOSE
AS POSSIBLE TO THE HINGES.

OPTIONAL SHIMMED LOCK