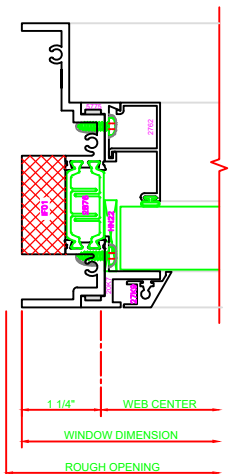


**130 HEAD**  
 SERIES: 450G  
 CASEMENT IN  
 4-BAR ARMS

**433 JAMB**  
 SERIES: 450G  
 CASEMENT IN  
 4-BAR ARMS

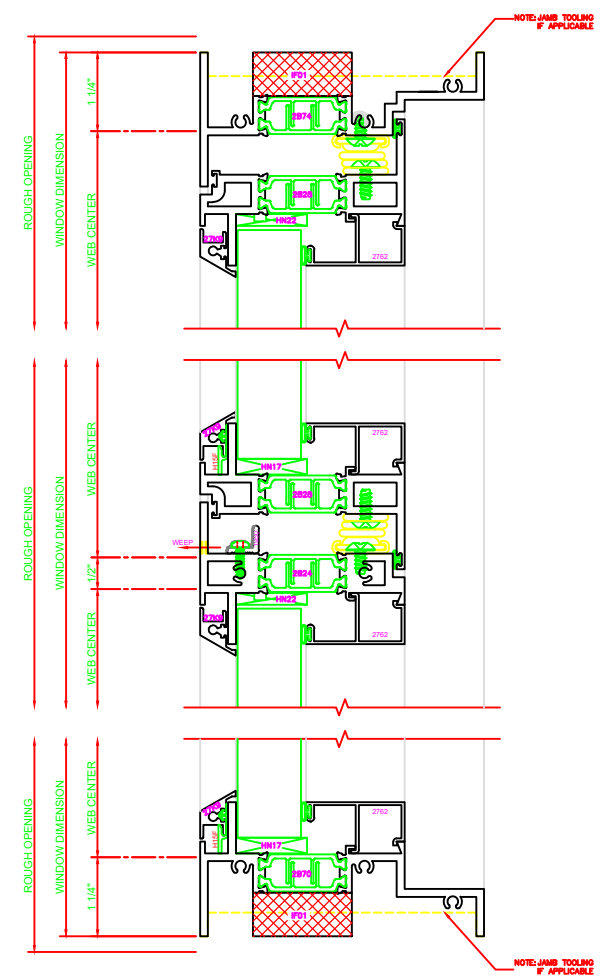
**434 JAMB**  
 SERIES: 450G  
 CASEMENT IN



**402 JAMB**  
 SERIES: 450G  
 FIXED

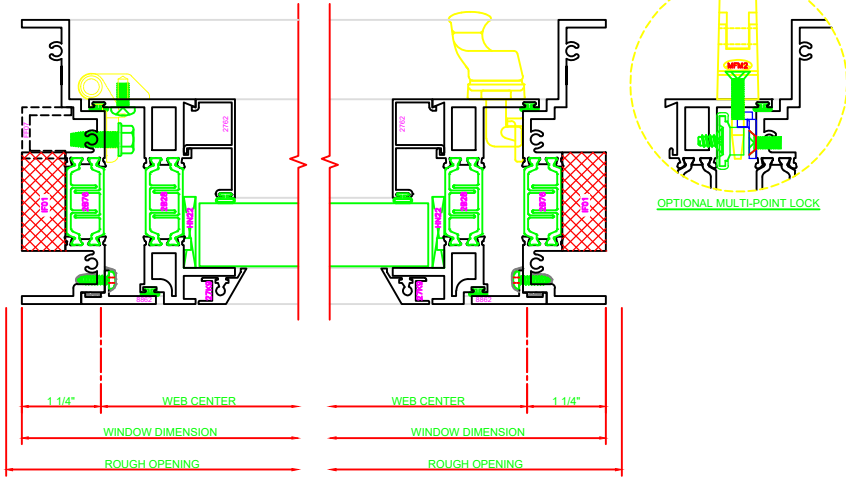
**531 MEETING RAIL**  
 SERIES: 450G  
 C.I./FIXED  
 4-BAR ARMS

**200 SILL**  
 SERIES: 450G  
 FIXED



## 4-BAR ARMS BUTT HINGE

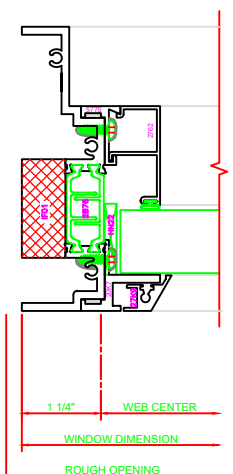
**13** **ERECTOR NOTE:**  
 THE HINGED JAMB FRAME SHALL BE  
 INSTALLED PLUMB. ALL HINGES SHALL  
 BE SECURELY BLOCKED AND  
 ANCHORED TO THE CONDITION  
 THROUGH THE HINGES OR AS CLOSE  
 AS POSSIBLE TO THE HINGES.



**131 HEAD**  
 SERIES: 450G  
 CASEMENT IN  
 BUTT HINGE

**435 JAMB**  
 SERIES: 450G  
 CASEMENT IN  
 BUTT HINGE

**434 JAMB**  
 SERIES: 450G  
 CASEMENT IN



**402 JAMB**  
 SERIES: 450G  
 FIXED

**533 MEETING RAIL**  
 SERIES: 450G  
 C.I./FIXED  
 BUTT HINGE

**200 SILL**  
 SERIES: 450G  
 FIXED

