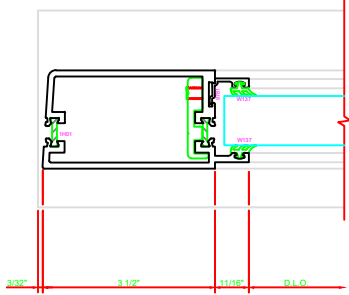
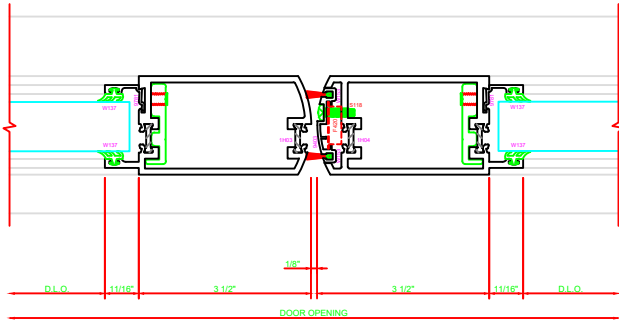


300 STILE
S/A D302 FOR OFFSET PIVOTS

ERASE NOTE
BUTT HINGES CAN NOT BE
USED WITH THERMASTILE
DOORS

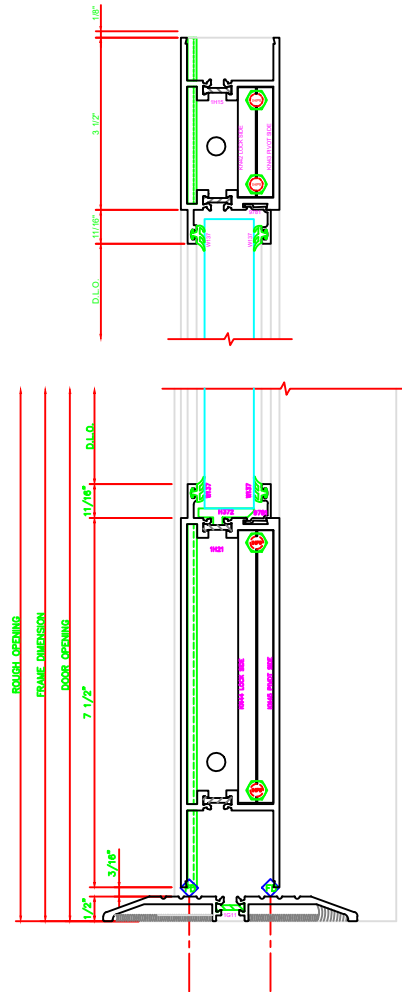
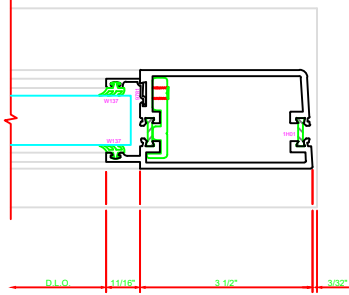


401 MEETING STILES
D302



301 STILE
S/A D302 FOR OFFSET PIVOTS

ERASE NOTE
BUTT HINGES CAN NOT BE
USED WITH THERMASTILE
DOORS



100 TOP RAIL
S/A D302

ERASE NOTE
TOP RAIL FOR SURFACE CLOSERS
OR DORMA TYPE C.O.C. NOT LCN
C.O.C.

200 BOTTOM RAIL
S/A D302