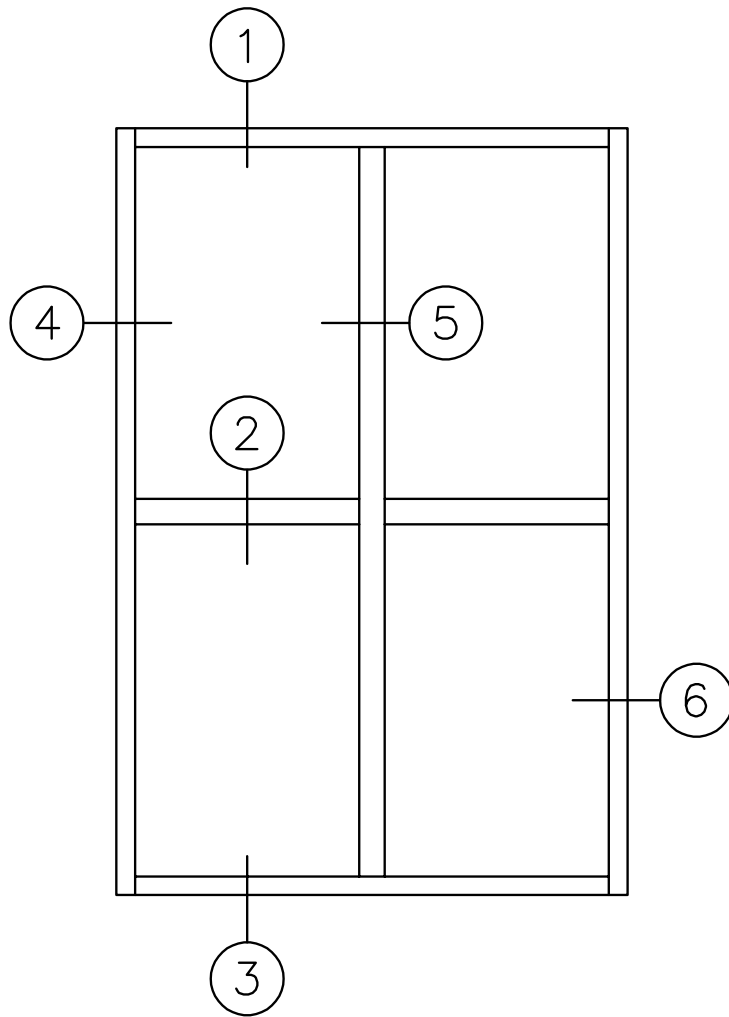




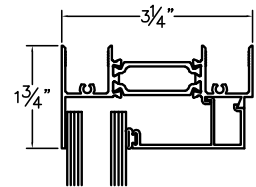
---

<b>STANDARD DETAILS.....</b>	<b>4</b>
<b>SCROLL / SQUARE PANNING .....</b>	<b>5</b>
<b>WRAP AROUND PANNING / RECEPTOR SYSTEM .....</b>	<b>6</b>

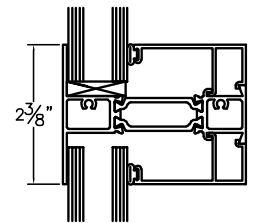
EFCO reserves the right to change configurations without prior notice when deemed necessary for product improvement. For specific product applications, consult your EFCO representative.



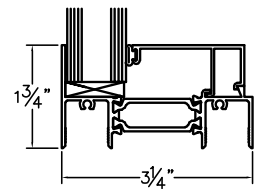
1  
Head



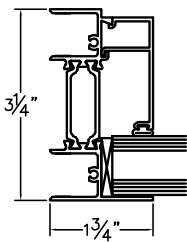
2  
True Muntin



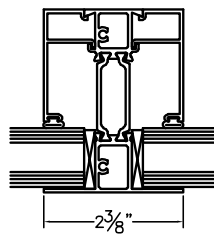
3  
Sill



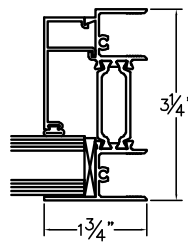
### Typical Elevation



4  
Jamb



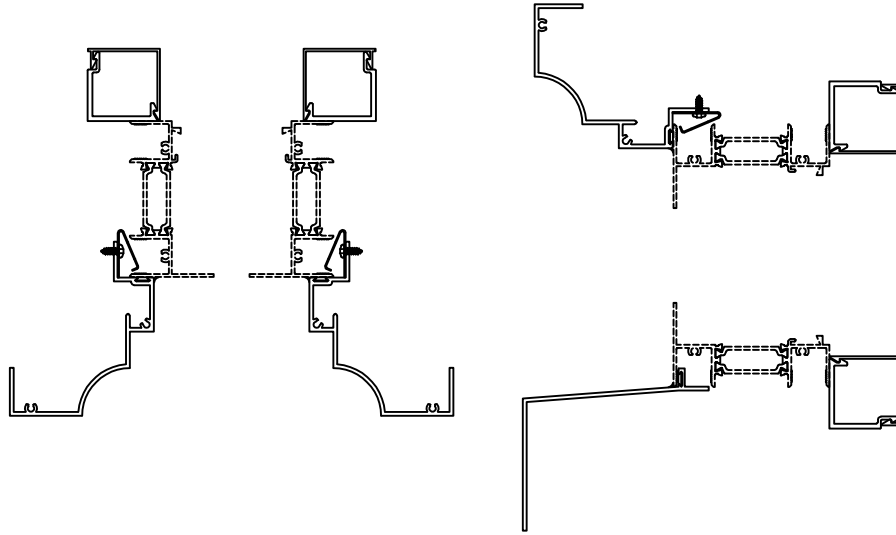
5  
True Muntin



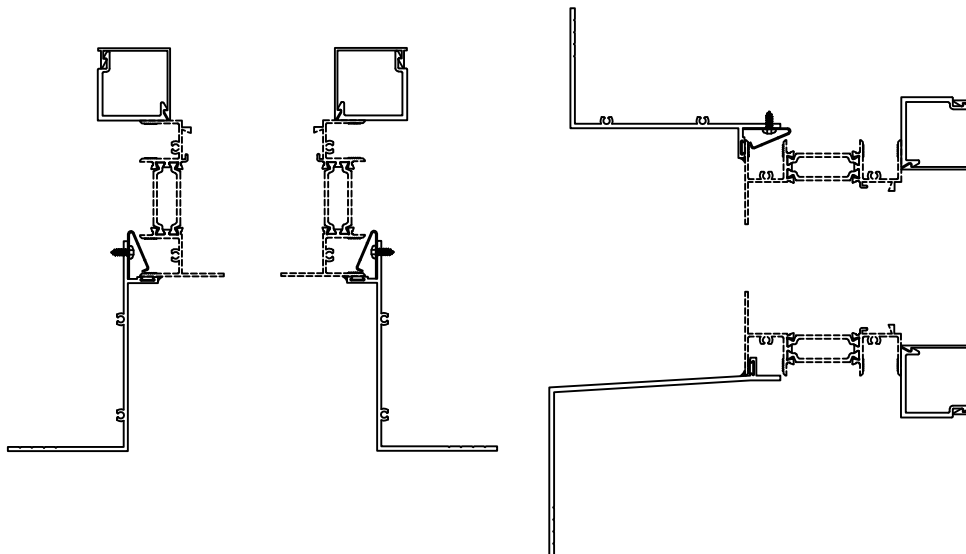
6  
Jamb



### Scroll Panning

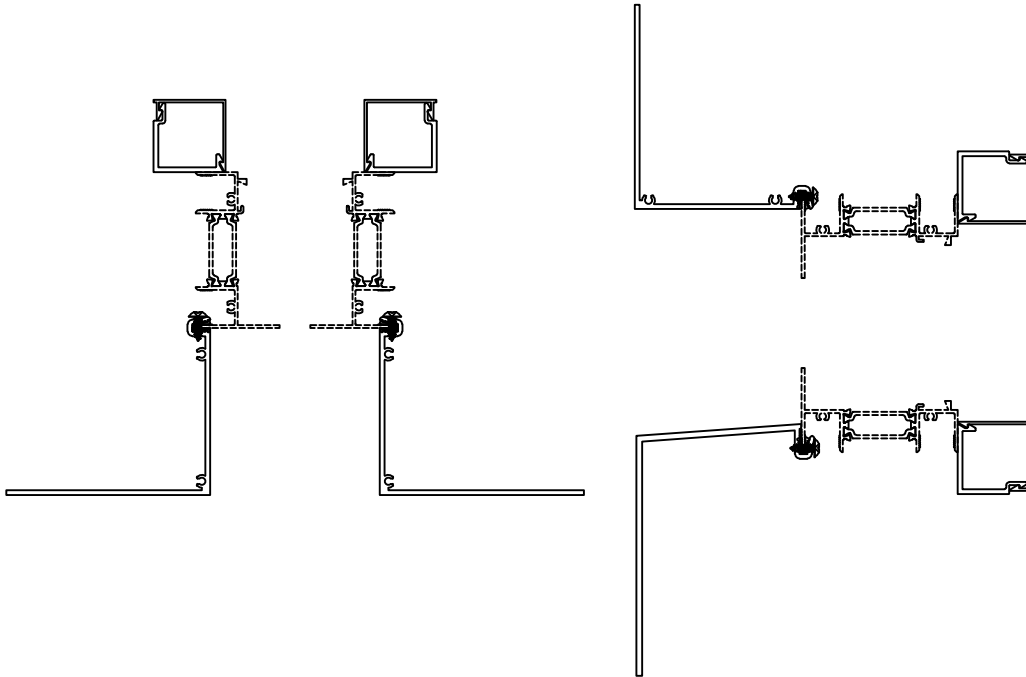


### Square Panning





### Wrap Around Panning



### Subframe/Receptor System

