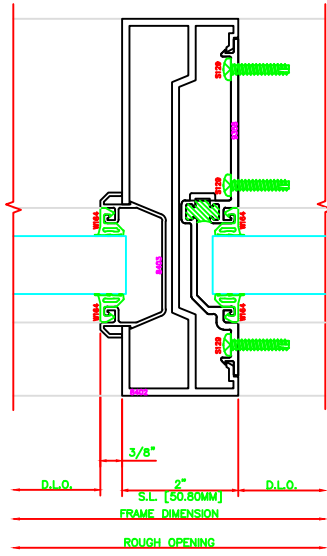
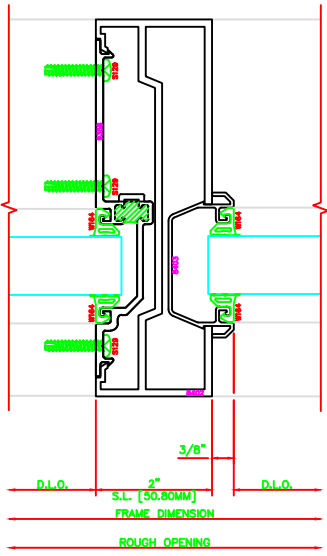


| | |
|-----|-----------|
| 801 | DOOR JAMB |
| 406 | 6 1/2" |

| | |
|-----|-----------|
| 804 | DOOR JAMB |
| 406 | 6 1/2" |

ERASE NOTE:
TRANSOM INSERT
ABOVE DOOR
48" MAX.

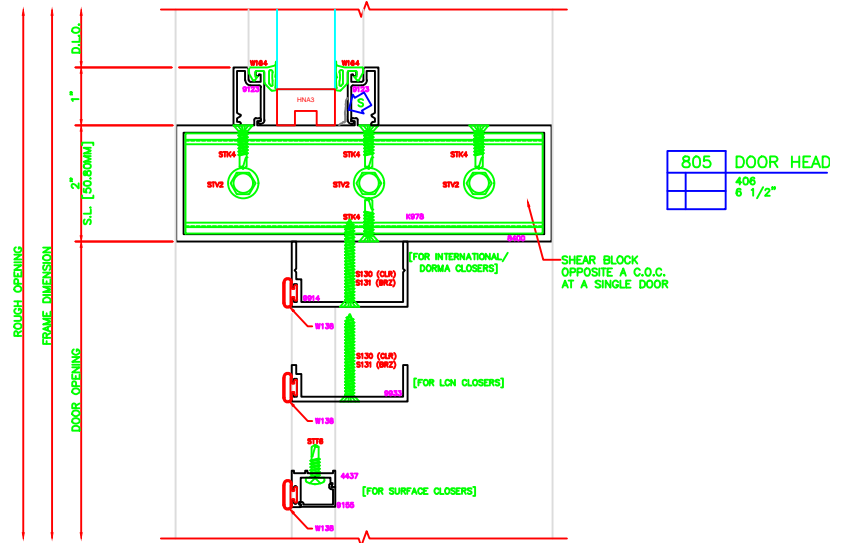
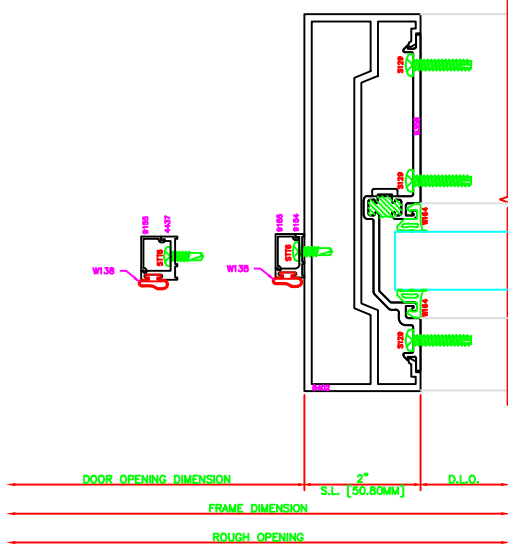
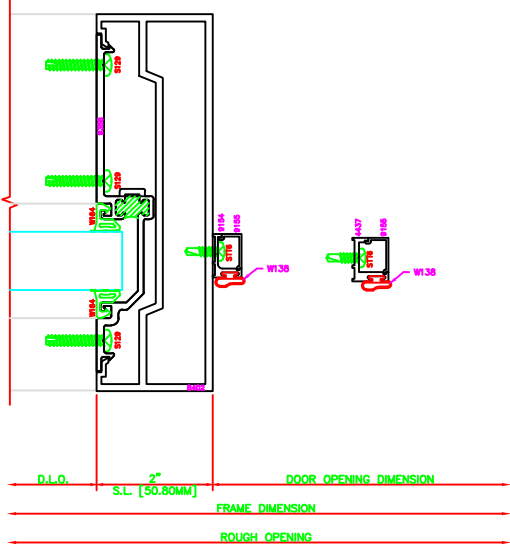


| | |
|-----|-----------|
| 802 | DOOR JAMB |
| 406 | 6 1/2" |

| | |
|-----|-----------|
| 803 | DOOR JAMB |
| 406 | 6 1/2" |

ERASE NOTE:
OUTSWING JAMB FOR OFFSET
Pivot, BUTT HINGE AS SHOWN,
CONTINUOUS HINGE REQUIRES
4437/9155/STT6/W138

ERASE NOTE:
OUTSWING JAMB FOR OFFSET
Pivot, BUTT HINGE AS SHOWN,
CONTINUOUS HINGE REQUIRES
4437/9155/STT6/W138



| | |
|-----|-----------|
| 805 | DOOR HEAD |
| 406 | 6 1/2" |